

SPECIFICATIONS:

- FREQUENCY: 0.5 GHz TO 18 GHz
- INSERTION LOSS: REFLECTIVE: 2.5db
ABSORPTIVE: 3.5db
- ISOLATION: 0.5 GHz TO 2 GHz: 60db
2 GHz TO 18 GHz: 70db
- VSWR: REFLECTIVE IN/OUT: 2.0:1
ABSORPTIVE IN/OUT: 2.0:1
ABSORPTIVE OUT/OFF: 2.0:1
- SPEED: RISE: 10ns TYPICAL, 15ns MAX.
FALL: 10ns TYPICAL, 15ns MAX.
DELAY ON: 75ns TYPICAL, 100ns MAX.
DELAY OFF: 75ns TYPICAL, 100ns MAX.
- POWER INPUT: (CW)+20dBm (STANDARD), +10 dBm (HIGH SPEED)
- SURVIVAL POWER: 1 WATT CW, 10 WATTS PEAK 1 usec
- CONTROL: TTL LOGIC "0"=ON "1"=OFF
- POWER SUPPLY: +5V @ 100 mA MAX.
-5V @ 75mA MAX.(RELECTIVE)
100mA MAX.(ABSORPTIVE/NON-REFLECTIVE)
- SIZE: 1.000 (L) x 1.000 (W) x 0.500 (H)
- WEIGHT: 2 OZ. MAXIMUM

OPTIONS:

SINGLE CONTROL WITH SOLDER PIN STANDARD

- IND-SP..... INDEPENDANT CONTROL WITH SOLDER PIN
- 10M18..... 10 MHz TO 18 GHz (INSERTION LOSS INCREASES BY 1.5db AT 10 MHz AND 0.5db AT 18 GHz)
- 100M18..... 100 MHz TO 18 GHz (INSERTION LOSS INCREASES BY 1.5db AT 100 MHz AND 0.5db AT 18 GHz)
- 118..... 1 GHz TO 18 GHz (NO CHANGE IN INSERTION LOSS)
- 218..... 2 GHz TO 18 GHz (NO CHANGE IN INSERTION LOSS)
- 412..... 4 GHz TO 12.4 GHz (NO CHANGE IN INSERTION LOSS)
- 618..... 6 GHz TO 18 GHz (NO CHANGE IN INSERTION LOSS)
- 1218..... 12 GHz TO 18 GHz (NO CHANGE IN INSERTION LOSS)
- 100M20..... 100 MHz TO 20 GHz (INSERTION LOSS INCREASES BY 1.5db AT 100 MHz AND 1.0db AT 20 GHz)
- 220..... 2 GHz TO 20 GHz (INSERTION LOSS INCREASES BY 1.0db AT 20 GHz)
- 1020..... 10 GHz TO 20 GHz (INSERTION LOSS INCREASES BY 1.0db AT 20 GHz)
- B01..... -12V POWER SUPPLIES
- B02..... -15V POWER SUPPLIES
- B03..... REVERSE LOGIC "1"=ON "0"=OFF
- B04..... DRIVERLESS, CURRENT CONTROLLED
- B05..... HIGH SPEED, TURNON/TURNOFF 20 nsec MAXIMUM WHEN APPLICABLE OR OPTION HS
- B06..... HIGH POWER - SPECIFY CW POWER, PEAK POWER, PULSE WIDTH, DUTY CYCLE, RF FREQUENCY AND BANDWIDTH
- B07..... CUSTOM DESIGNED PRODUCT- SPECIFY INITIALS OF CUSTOMER
- B08..... LOW VIDEO TRANSIENTS - SPECIFY VIDEO BANDWIDTH
- B09..... LOW INSERTION LOSS VERSION
- B10..... HIGHER ISOLATION VERSION
- B11..... 0.4" THICK VERSION WITH REMOVABLE 2 HOLE FLANGE SMA (F)
(SEE DATA SHEET FOR MSN-2DR/DT-06-STANDARD)

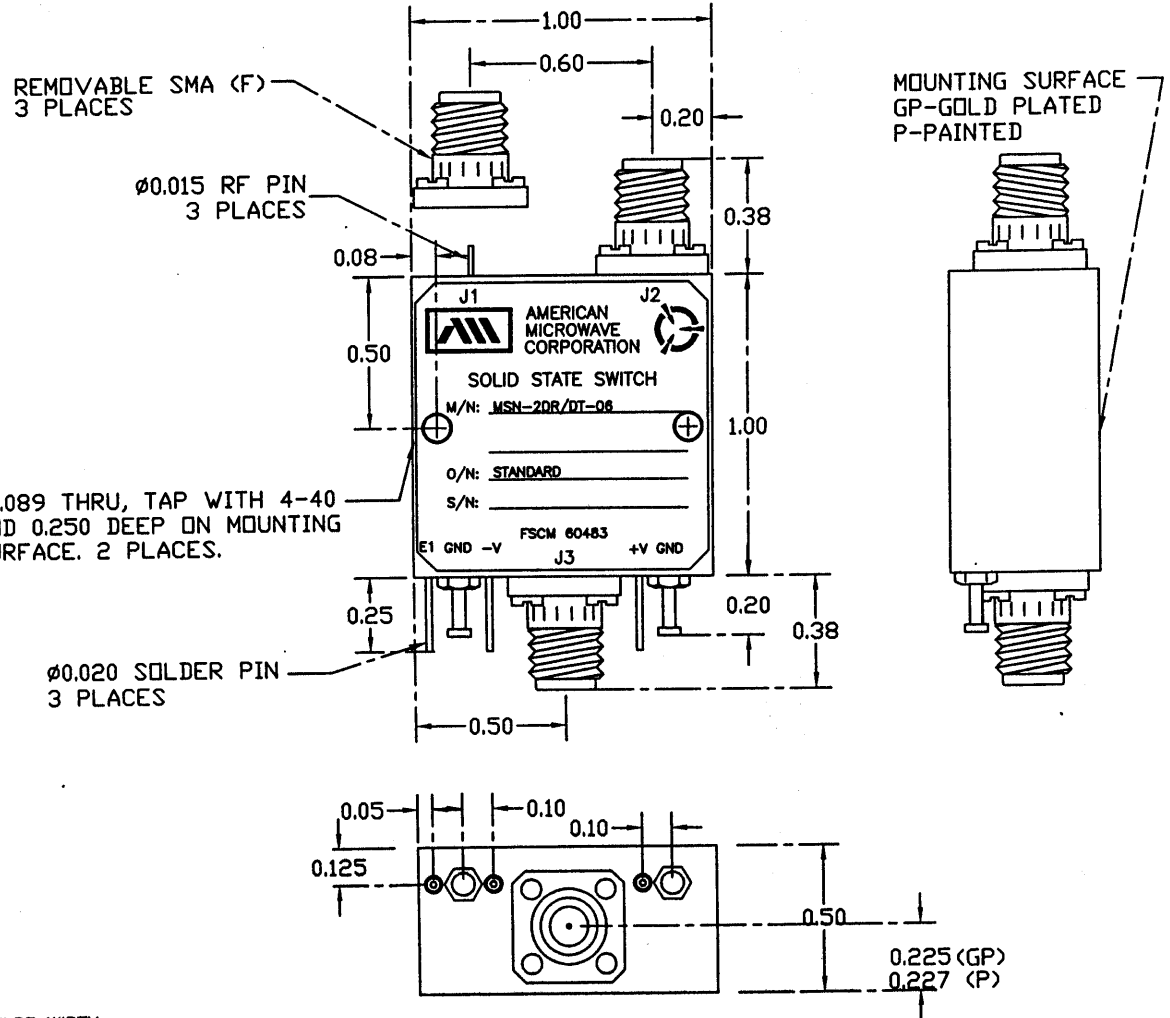
ENVIRONMENTAL RATINGS:

- TEMPERATURE: -55°C TO +85°C (OPERATING)
-65°C TO +125°C (STORAGE)
 - HUMIDITY: MIL-STD-202F, METHOD 103B COND. B
 - SHOCK: MIL-STD-202F, METHOD 213B COND. B
 - VIBRATION: MIL-STD-202F, METHOD 204D COND. B
 - ALTITUDE: MIL-STD-202F, METHOD 105C COND. B
 - TEMPERATURE CYCLE: MIL-STD-202F, METHOD 107D COND. A
- NOTE: THE ABOVE SPECIFICATIONS ARE SUBJECT TO CHANGE OR REVISION

ALL DIMENSIONS ARE IN INCHES
TOLERANCES:

X.XX ±0.020
X.XXX ±0.010

REVISIONS				DATE	APPROVED
ZONE	REV.	DESCRIPTION		12/8/98	
		ORIGINAL RELEASE			



PART NO.		AMERICAN MICROWAVE CORPORATION FREDERICK, MARYLAND			
APPROVALS		DATE	TITLE		
DRAWN K SIMMS		12/8/98	OUTLINE DRAWING		
CHECKED WPT		12/30/98	MSNC-2DR/DT-06-STANDARD		
ISSUED JK		12/30/98	REFLECTIVE OR NON-REFLECTIVE/ABSORPTIVE SOLID STATE SWITCH		
SIZE	FSCM NO.	DWG NO.	REV.		
A	60483	100-4680-1			
SCALE		SHEET		1 of 1	